

# EXTRAS and CUSTOM CATALOGUE



All specifications shown here may be replaced by others of an equivalent level.

The images shown are the closest possible approximation to the final result of the projected building with the qualities indicated in this document. Modifications may be made due to technical or legal requirements, provided that they are justified and do not involve a substantial alteration of the object and/or a reduction in the quality of the materials/equipment of the property. The furniture shown is not included. All information and documentation will be provided in accordance with the provisions of Royal Decree 515/1989 of 21 April 1989 and other complementary state or regional regulations.

## General Index

- . Swimming pool
- . Vehicle area
- . Toilet room
- . Water utilities
- . PREFERENCE service
- . General services
- . Domestic appliances pack

## Index by promotion

- . Ceiling extractor hood
- . Rear living area
- . Landscaping project
- . Solar protection elements
- . Storage system
- . LED lighting
- . Dressing area

## Swimming pool

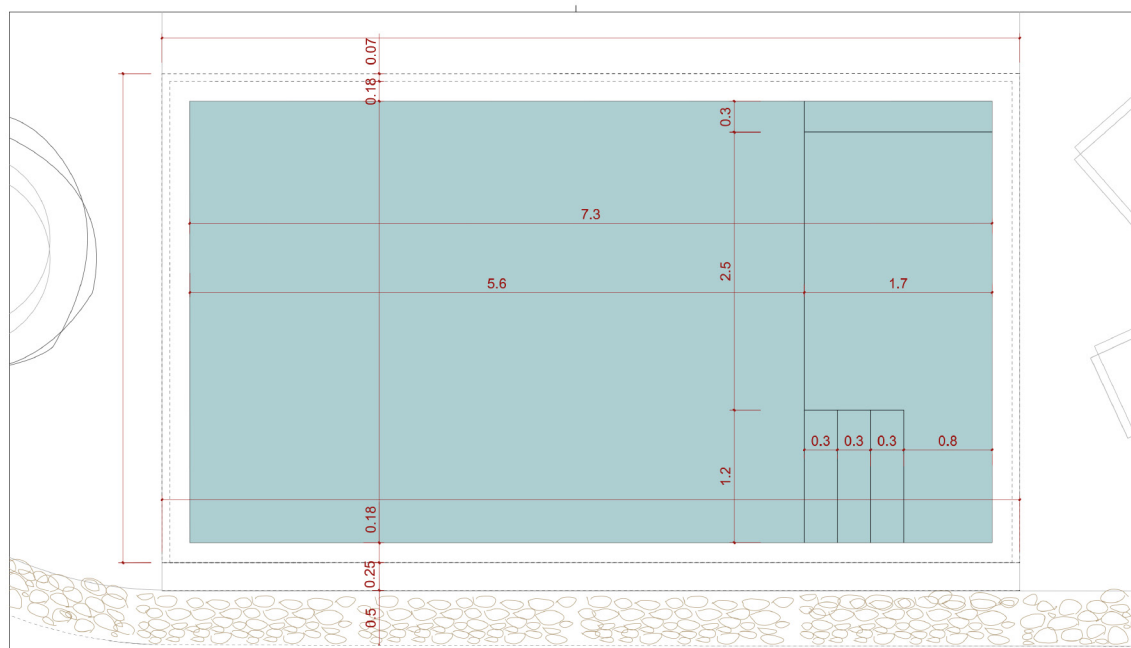
The outdoor swimming pool is offered as standard lined with non-slip porcelain tiles in a square format with a total water surface of 7.30x4.00m, divided between the access steps and the bathing area.

The material of the pool can be modified both in colour and shape. We can select a shade of gresite from our range of options as well as modify the 15x15cm porcelain tile for its cladding.



### LIGHTING PROJECT

Remote control system for control of interior lights.





### NET 'N' CLEAN

Six-channel dispensing valve that forms part of the integrated pool bottom cleaning system.

It sequentially distributes the water flow through its various outlets to reach the nozzles that clean the pool.

Made of plastic and titanium, it is resistant to salt electrolysis treatment.



### HEAT PUMP

The heat pump is a thermodynamic equipment, the equipment captures calories from the outside air to transfer them directly to the pool water.

Low consumption option, it hardly needs any electrical energy.

Efficient system, hardly generates CO2 emissions to the environment.

Multifunctional system, you can heat the water and enjoy outdoor air conditioning.



### SALT CHLORINATOR

Device that is added to the filtration equipment independently to treat and conserve the water in swimming pools by generating chlorine from salt dissolved in water to disinfect the pool.

We avoid the handling of chemical products.

No unpleasant smell and taste.

We avoid irritation to eyes and dry skin.

Significant savings in maintenance.

Ecological option.



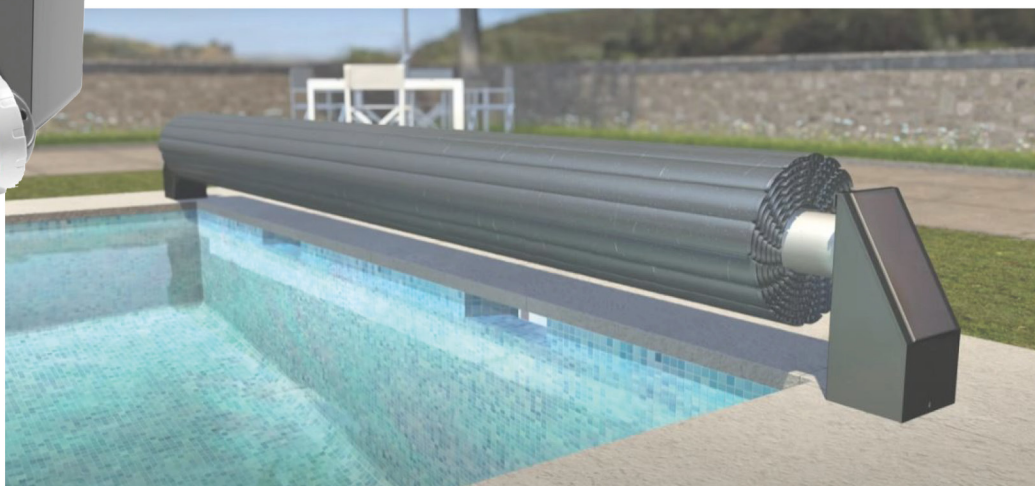
### WATER SHEET COVER

A remote-controlled external cover that allows the entire pool shell to be used and eliminates the need for building work.

Stainless steel or lacquered aluminium supports.

Highly resistant PVC or polycarbonate slats.

Anodised aluminium roller.



# Vehicle area

## CARPORT

It is a modern design element with dimensions according to needs and available space, which guarantees an effective protection of the vehicles against external aggressions, such as rain, hail or even UV rays.

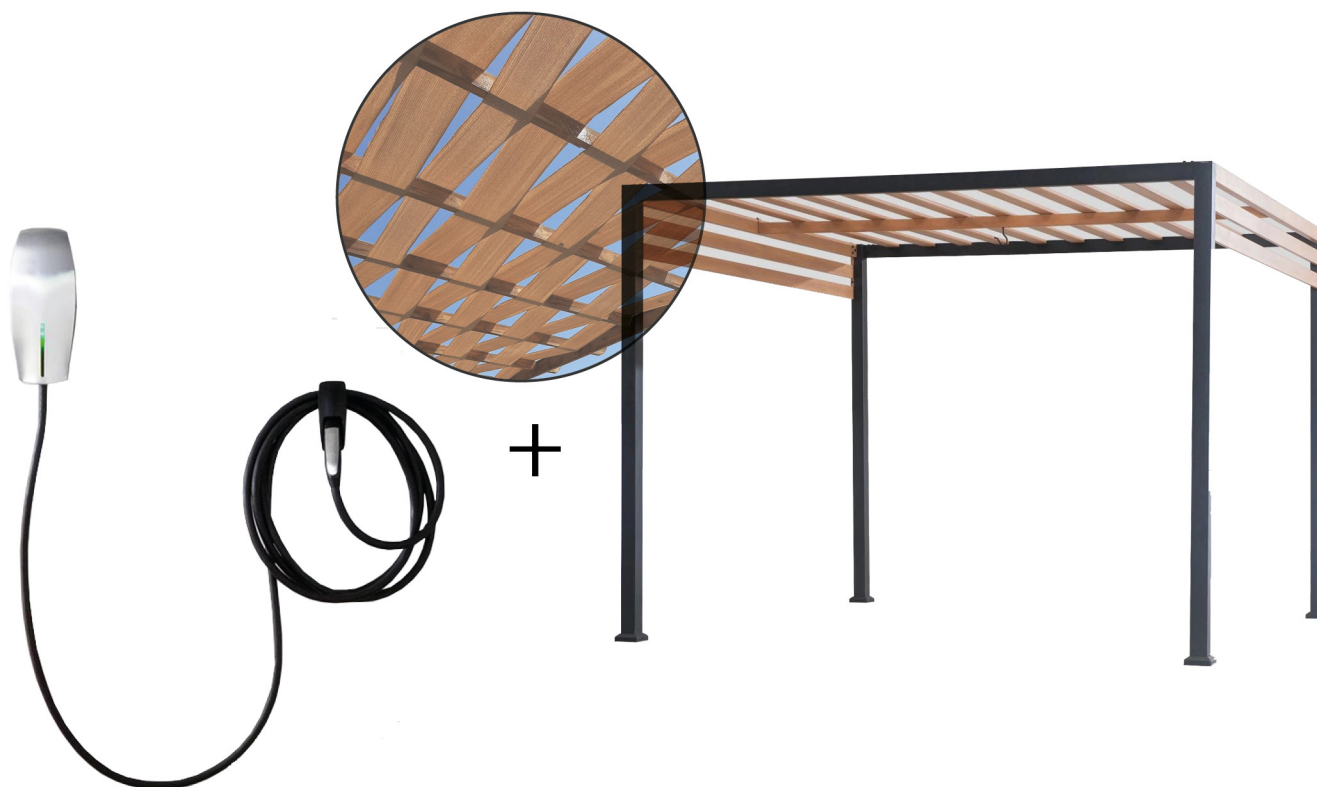
With its thermo-lacquered aluminium structure and its roof made of wood or imitation wood slats, it guarantees extraordinary resistance to outdoor conditions.

## ELECTRIC CHARGER

Intelligent electric vehicle charging with high power and compact size allows a wide variety of options thanks to the associated app, such as planning charging sessions to take advantage of reduced rates during off-peak hours or monitoring the charging status.

With IP54 and IK08 protection ratings, it is water and dust resistant for safe outdoor installation. Ideal for everyday use in the home.

(PRE-INSTALLATION AT EXTRA COST)



# Toilet room

## SOUND PANEL

A new concept of understanding the shower space by offering a shower enclosure composed of a glass panel with an integrated "Bluetooth" audio system.

- Surround sound through the shower enclosure.
- Bluetooth 5.0 connection (connection and music playback with your phone).
- Power supply via lithium battery.
- Towel rail and integrated shelf.
- Housing available in Matte White and Black finish
- Smooth texture

## HYGIENIC SHOWER

An effective alternative to save space in your bathroom and not renounce the advantages of water for cleaning. A gesture as easy as lifting the shower from the support and activating the water outlet by means of a push button or lever.

## MODIFICATION GLASS FINISHES

It is possible to opacify the glass of your shower space at will, as well as to complete it with sliding screens.



Especial Ácido



Texturizado Carré



Transparente con Satinado



Transparente





# Water utilities

## OSMOSIS

The most effective water purification treatment available. With under-sink installation and annual maintenance, it guarantees contaminant-free water at all times from your own tap.

Health, always drinking quality water helps to reduce countless pathologies.

Convenience, no need to resort to buying bottled water and transporting it.

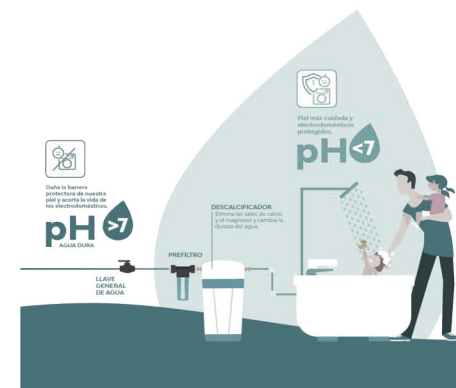
Saving, not wasting money on bottled water and extending the useful life of our household appliances.



## WATER SOFTENER

This new treatment protects us from limescale and corrosion throughout our installation, reducing costs and considerably reducing energy and water consumption.

It is located in the general entrance of the house, being suitable for any type of installation, and hardness. Thanks to this innovative technology, we obtain a very efficient, economical equipment with all kinds of guarantees.





## *\*\*Preference\*\* service*

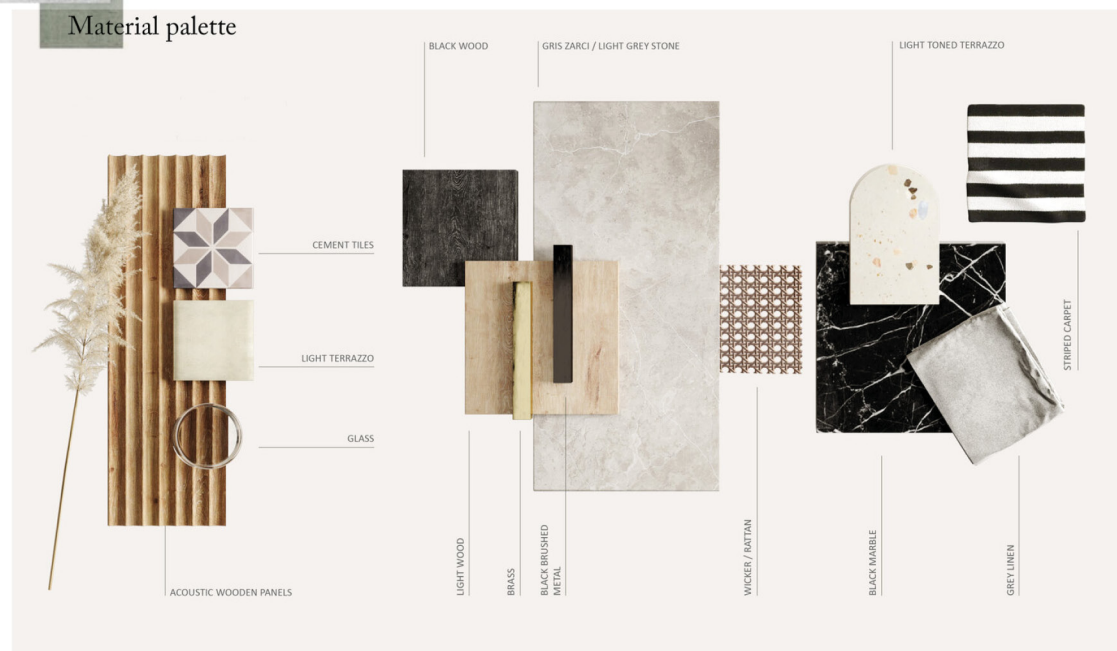
It will be possible to personalise various aspects of the home:

- Choice between different types of environment according to taste.
- Distribution of spaces as best suits the needs.
- Improvement of the qualities and finishes.

We also offer an interior design service with which you can enjoy your home from day one. Based on the experience of the show home, we can manage the pieces of furniture that best suit your tastes and needs.



### Material palette



## General services

### Electric **RADIANT FLOOR**

Independent slat system with chronothermostat that controls the room and floor temperature of THE DIFFERENT BATHROOMS and is fully programmable via Wifi, avoiding heat loss and guaranteeing optimum energy efficiency.



### **ALUMINIUM CARPENTRY/EXTRA BLINDS**

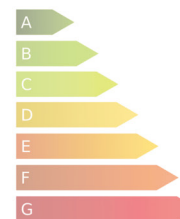
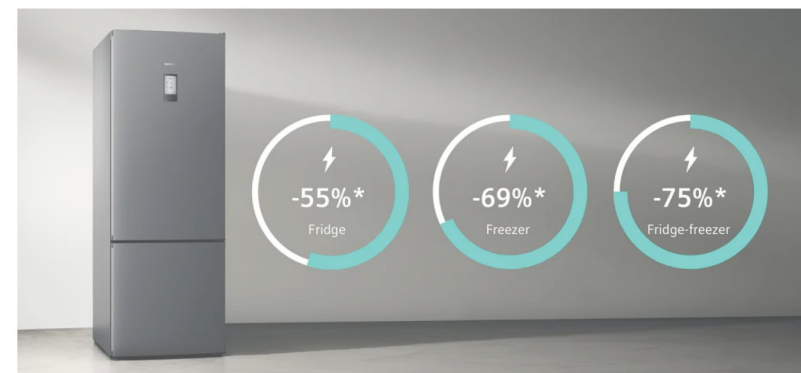
Slats made of highly resistant extruded aluminium, which provides great security. Automated for greater comfort.



# Domestic appliances pack

We offer efficient, durable and sustainably manufactured appliance sets that help you live better, both inside and outside the home.

The appliance sets selected specifically for you by our experts belong to the best brands on the market and combine innovative technology with attractive designs to create spaces full of smart and intuitive products, which undoubtedly enrich your own lifestyle.





## Ceiling extractor hood

The kitchen is presented as an open space, providing aesthetic commitment and quality to the rest of the room.

As standard, it is presented as a warm, fully panelled kitchen where everything is insinuated but nothing is shown.

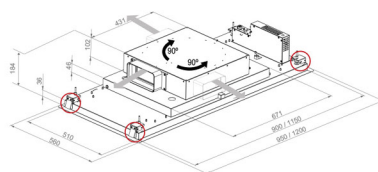
The same happens with the extractor hood that is concealed in the ceiling, it does not cause a visual impact on the environment but fulfils its main functions providing double service to its use.

The extractor hood in a satin white glass finish offers the possibility of customising in any colour from the RAL chart:

- Airlink
- ECO PLUS
- Energy classification A++
- Air Clean
- Touch remote control
- Filter saturation detection system
- SIA Safety



Motor Interior / Interior Motor



Apertura de puerta reversible / Reversible door opening  
Box rotativo / Rotary Motor Box



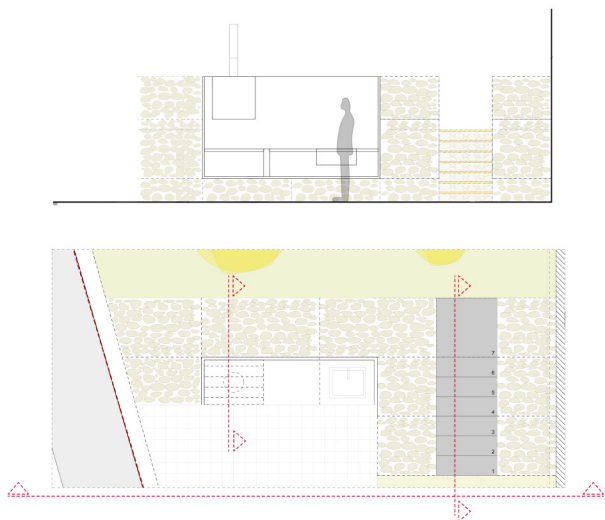
# Rear living area

## BARBECUE

Barbecue design with a metal structure on a concrete wall, with a large grill as well as a spacious bench to cook comfortably.

Steel sheet ST-37, 3mm thick  
1 ashtray with lid  
1 400 stainless steel grill  
Ground anchoring  
Anti-rust and anti-caloric primer

\*EXTRAS: Sink and tap, woodshed area, cupboard with 2 doors.  
\*Can be made to measure



# Landscaping project

A Mediterranean area with native vegetation of aromatic undergrowth on a woody base is planned.

It is divided into several areas of action:

## DESCENT TO SWIMMING POOL

On natural terrain, perfectly decorated with bark and whitish gravel, a series of large tropical style trees are placed, combined with a hedge that conceals the concrete background.

## TERRACED GARDEN

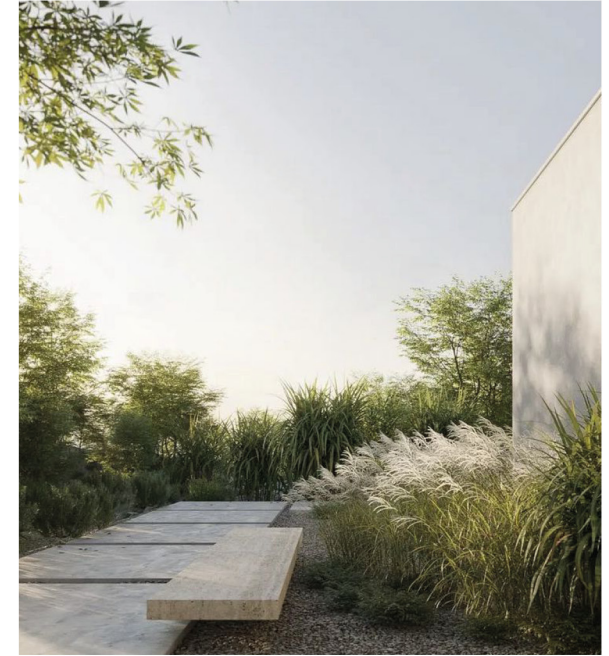
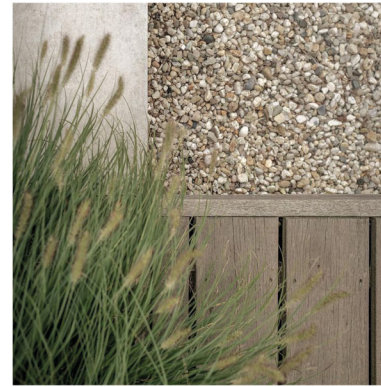
A wide variety of cacti are distributed along these terraces accompanied by natural wooden sleepers

## TALUD AREA

A completely Mediterranean garden of shrubs and creepers that blend into a natural complex of tonal and fragrant diversity.

## BARBECUE AREA

A combination of fruit trees and oleaceous plants that intensify the coastal character of our construction.

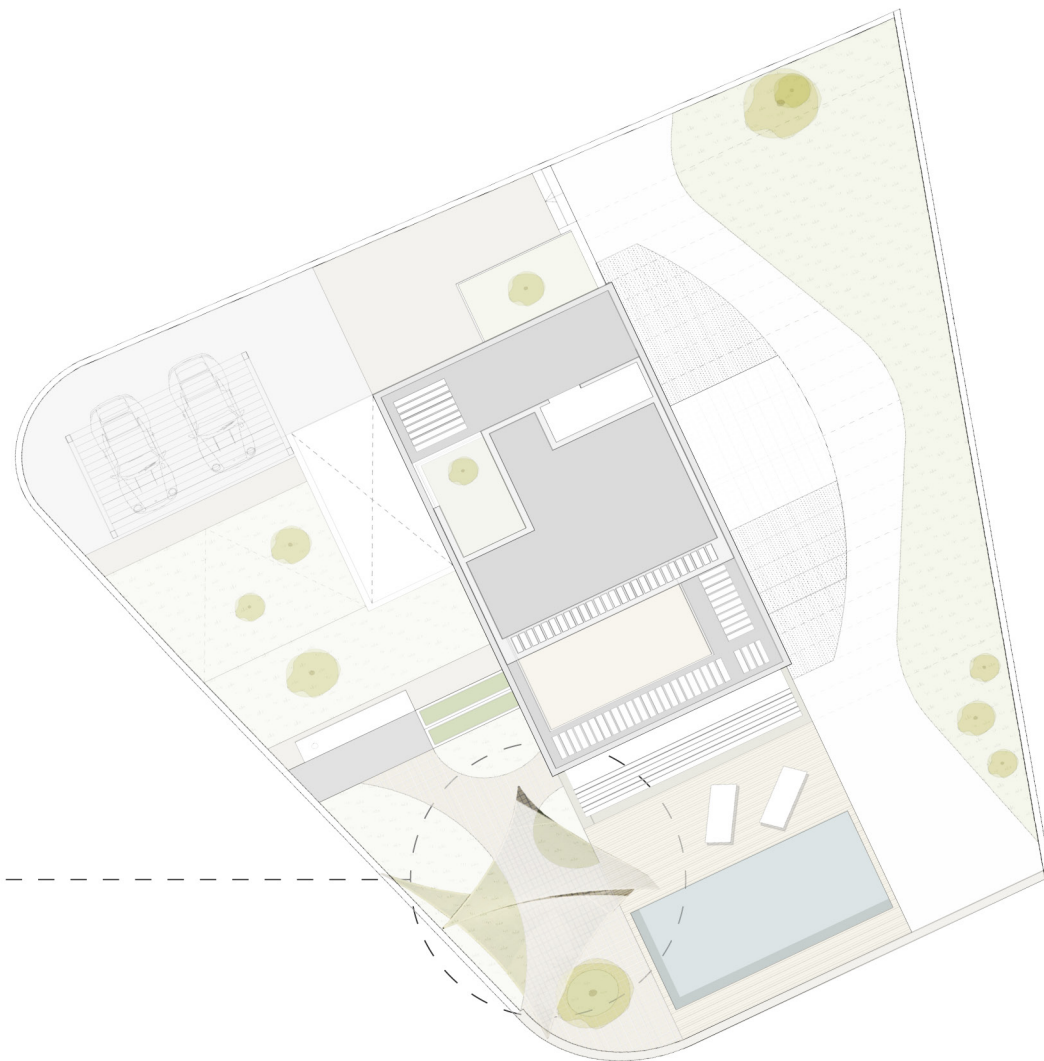


# Solar protection elements

## SAIL AWNING

Fixed or removable shade sails with structure so that you can establish an avant-garde oasis in the decoration of your terrace with an exclusive design. With rectangular, square or circular format, so that the adaptability of the shade canopy is ideal in the garden and forms part of its decoration.

Tensioned sails with high durability and minimum maintenance. The high quality materials developed with polyester and PVC are 100% waterproof and durable against wear and tear caused by the sun's rays.



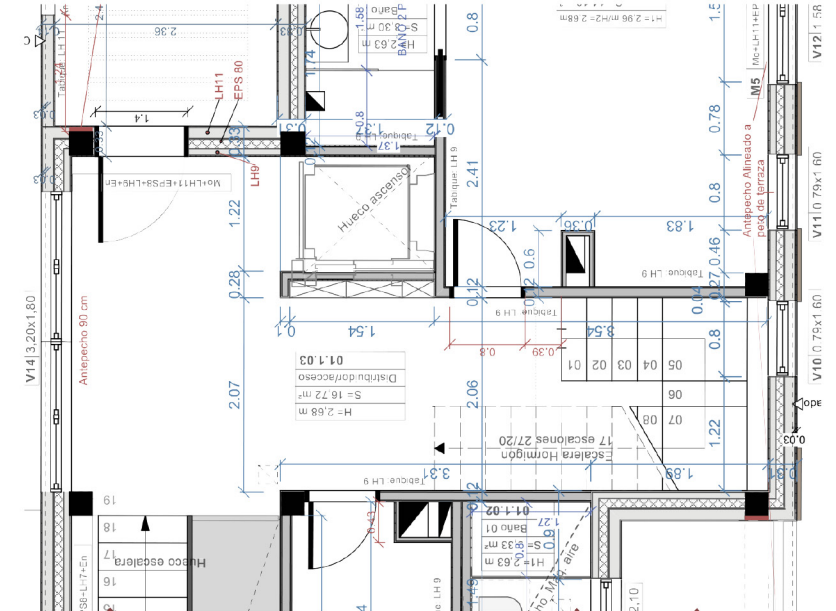


# Storage system

In order to maximise storage space and conceal structural elements as well as service machinery, several cupboards are planned for the following areas:

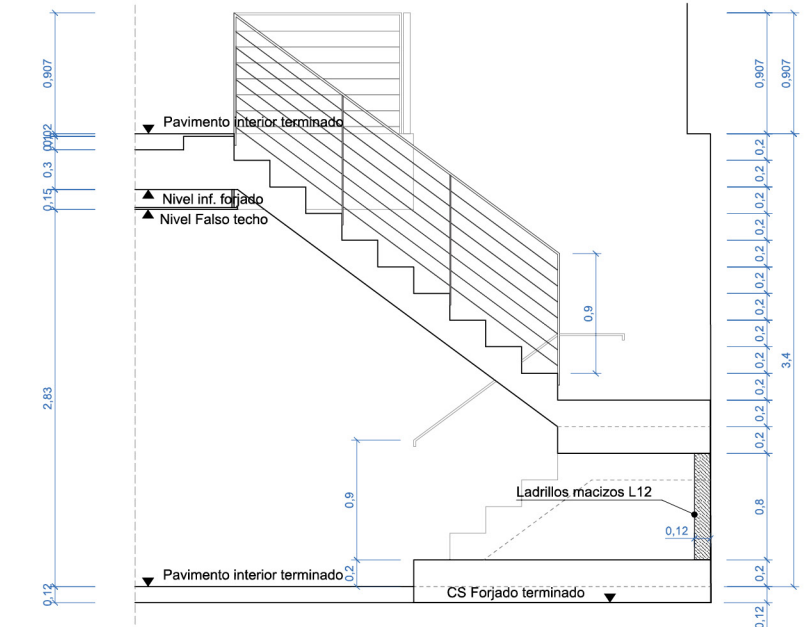
## ENTRANCE AREA

The wooden opening is reversed and a kind of coat rack is created to hang clothes or useful items and a series of upper and lower shelves for storage and shoe racks.



## STAIRWELL UNDER THE STAIRCASE

Due to the spaciousness of this area, a shelf front is placed as a bookcase and decoration while the other side can be used with extractable drawers.



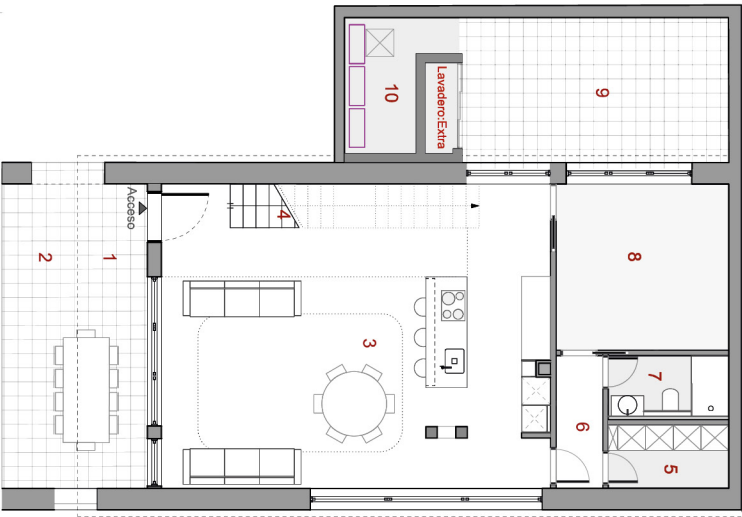
-Laundry area.

- machine room.
- under stairs.
- entrance area cupboard.



LAUNDRY AREA

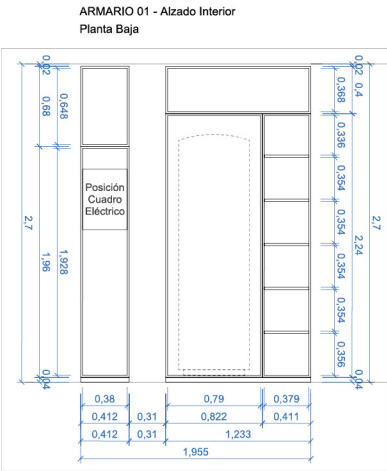
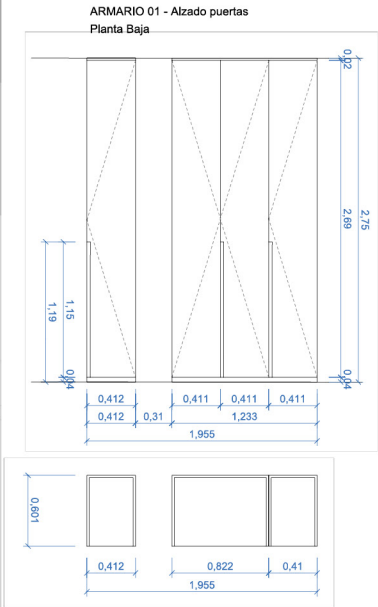
In an area of the English patio, an open space is created with water and electricity connections to place an outdoor bench and sink. It is limited by sliding mesh doors, to facilitate transpiration and ventilation of the space, avoiding the creation of humidity and bad odors.



FACILITY ROOM

A closet is made with an accessible door to hide the fan heater and a storage area as a pantry.

Electrical panel fully paneled and integrated with the rest of the vertical wall in the same style as the rest of the interior carpentry of the home: white color and push opening system.



ARMARIO 01 - Alzado interior  
Planta Baja - Cuarto instalaciones

Puertas	Lisas abatibles
Acabado	Lucas en blanco mate
Estructura	Tablero de 20mm
Acabado interior	Melaminado antracita
Cajoneras	No
Barra de colgar	No
Ablo	Si
Tirador tipo	Tipo push

# *Led lighting system*

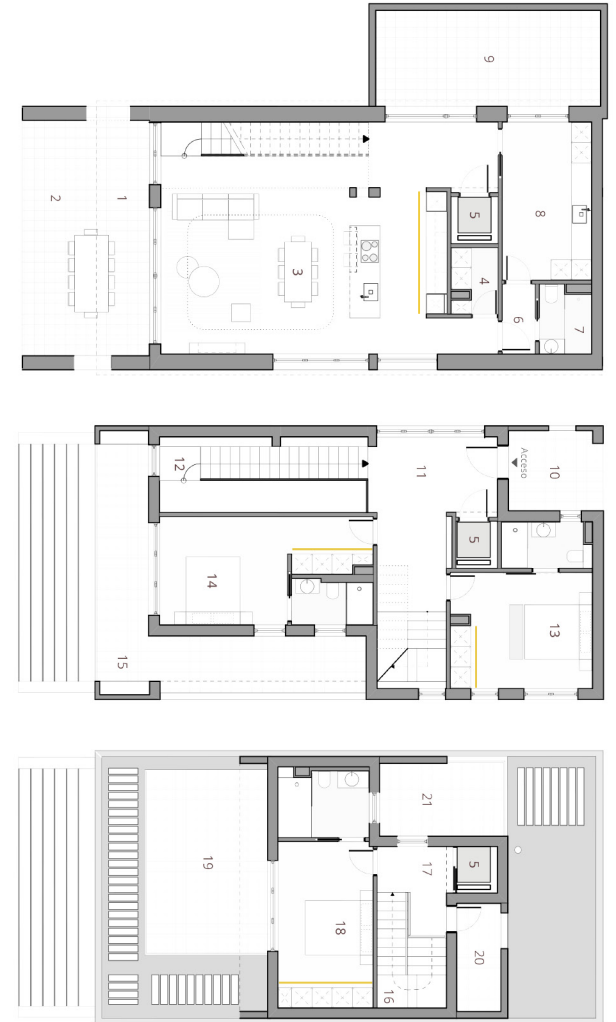
## **STANDARD LED**

Linear lighting on the exterior to emphasize the angles and volumes of this composition, highlighting the different architectural spaces.



## **EXTRA LED**

It is proposed as lighting to place a strip in front of each line of cabinets both in the different rooms and in front of the kitchen bench.



# Dressing area

## ROOM WARDROBES

The possibility of emphasizing the dressing room atmosphere in the main rooms is proposed, adding a touch of quality to our wardrobes with smoked or transparent glass doors and metal profiles in anthracite color.

\*low personalized quote according to measurements and design

