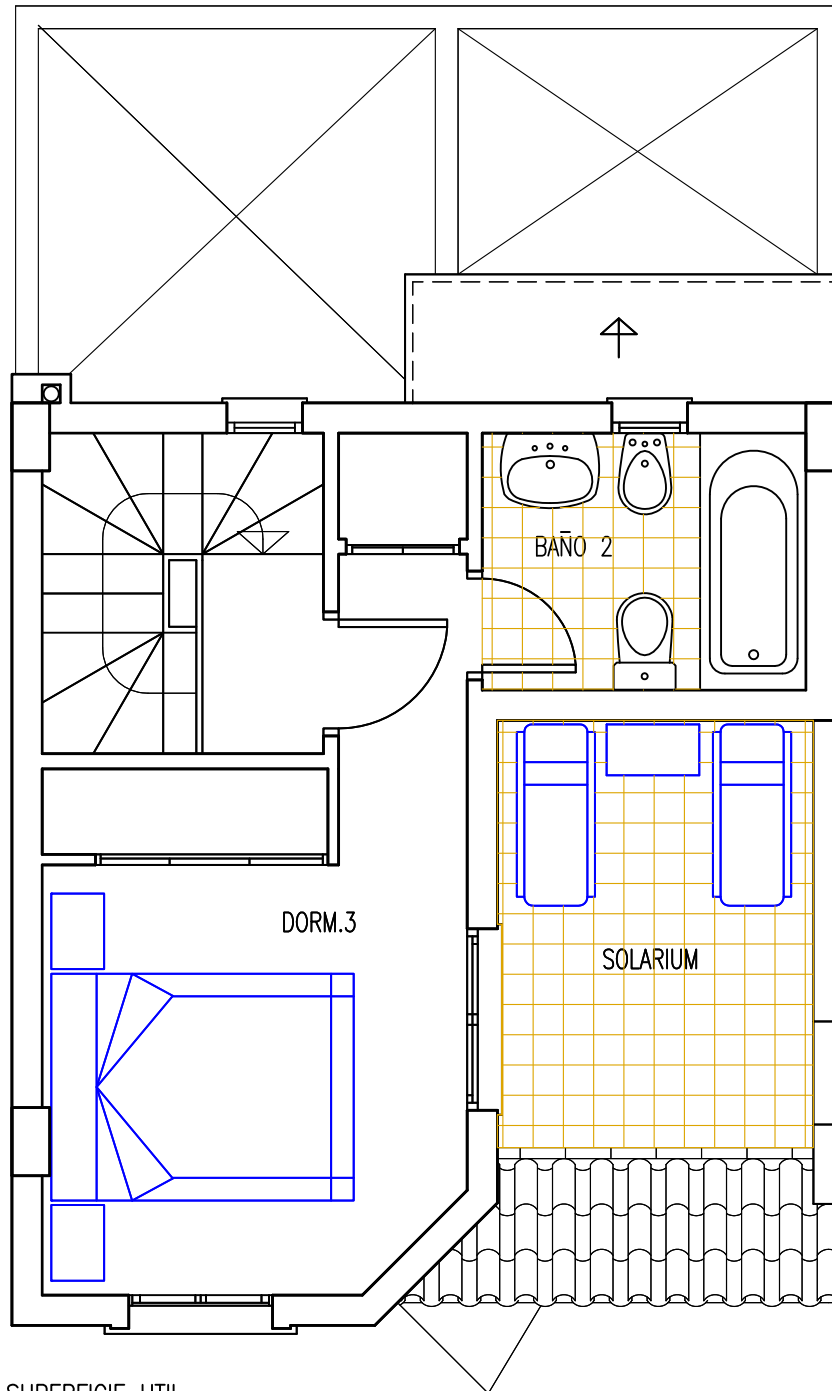


# VILLA MEDITERRANEO

## SANTA POLA



SUPERFICIE UTIL

PLANTA PISO 2

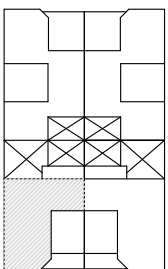
DORMITORIO 3 \_\_\_\_\_ 11.43 m<sup>2</sup>

BAÑO 2 \_\_\_\_\_ 3.64 m<sup>2</sup>

ESCALERA \_\_\_\_\_ 2.35 m<sup>2</sup>

TOTAL \_\_\_\_\_ 17.42 m<sup>2</sup>

( SOLARIUM \_\_\_\_\_ 5.90 m<sup>2</sup> )



### PLANTA PISO 2

### VIVIENDA TIPO BG4