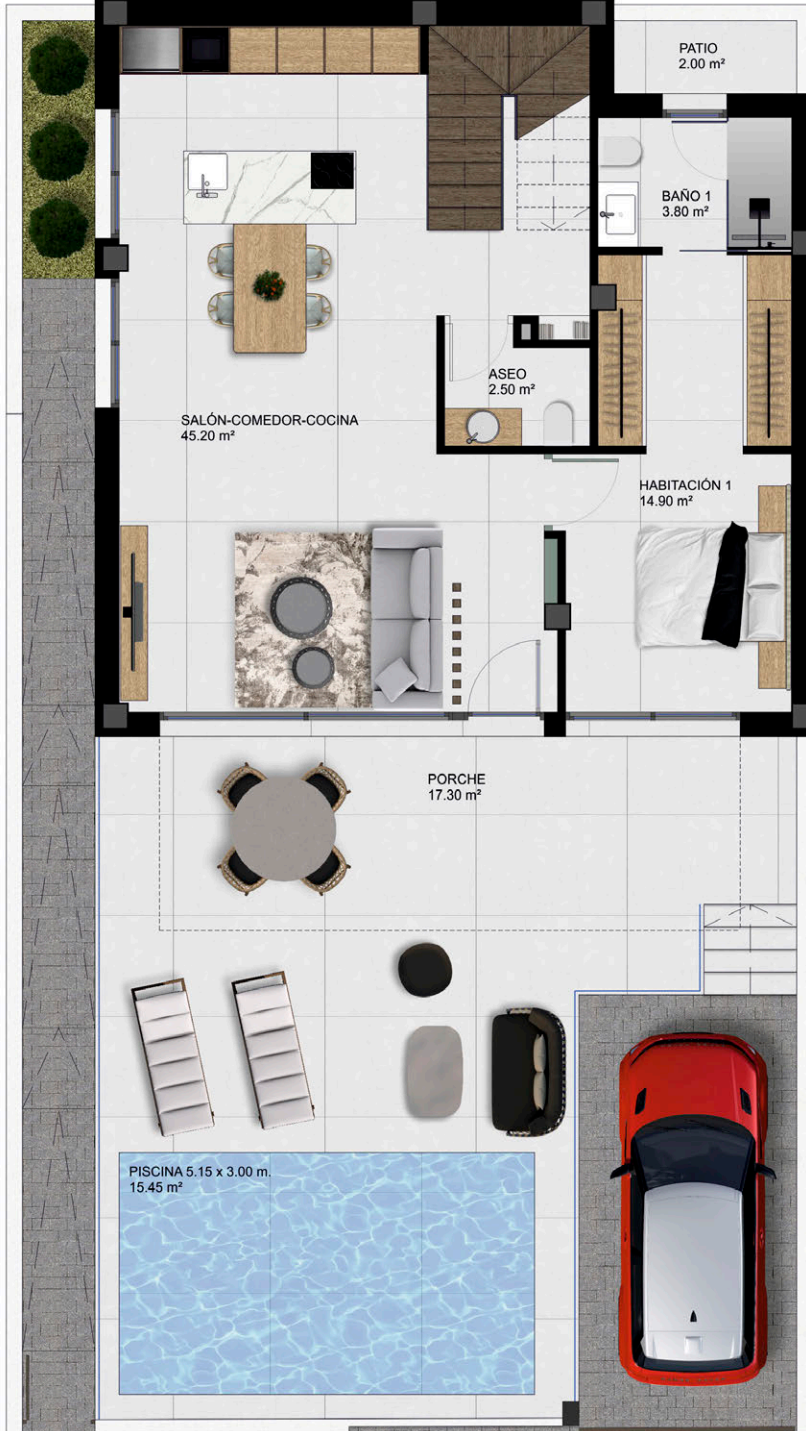


Ground floor



PLOT	171,11/173,60 m <sup>2</sup>
Ground floor	76,50 m <sup>2</sup>
First floor	48,40 m <sup>2</sup>
Terrace (50%)	12,65 m <sup>2</sup>
Uncovered terrace	15,20 m <sup>2</sup>
<b>TOTAL BUILT</b>	<b>152,75 m<sup>2</sup></b>

# Paris VII Curie 7.6/7.8